



Artists'  
Cooperative  
Residency &  
Exhibitions

**ACRE is a Chicago-based summer residency and exhibitions program. Run entirely by a large community of artist volunteers, our non-profit program helps fellow emerging artists develop, present, and grow their creative practices.**



# Artists' Cooperative

ACRE comprises a growing network of emerging artist peers, established artists, curators, critics, and gallerists.

## Residency

Each session includes twelve days of room & board with comfortable sleeping accommodations and chef-prepared meals.

Set on 1000 acres of Wisconsin's driftless region, communal studio spaces compliment access to facilities including a wood shop, screen-printing studio, recording studio and art & tech lab.

Residents can choose to participate in studio visits with a variety of established artists, curators and experienced educators, along with workshops, lectures, concerts, reading groups, critiques and other programming throughout each session.

## Exhibitions

Each resident is given the opportunity for a solo, duo or group exhibition in Chicago over the course of the calendar year following the residency. All alumni are also given web space on ACRE's digital flatfile, disseminated to curators and other interested parties and used for consideration for participation in art fairs and other opportunities.





SESSION ONE: JULY 10 - 21

SESSION TWO: JULY 24 - AUGUST 4

SESSION THREE: AUGUST 7 - 18

ONE SESSION (12 DAYS): \$600

TWO SESSIONS (26 DAYS): \$1200

FINANCIAL AID:

Full and partial scholarships, collaborative rates, and work-study positions are available. In 2012 over a third of residents received some sort of financial aid.

\* RATES SUBJECT TO CHANGE



## ACCOMMODATIONS

## Residents live together in a unique building made from salvaged materials.

Most residents stay in the sprawling Steuben Lodge, which houses around 40 people and contains a large central area that includes a library with wireless internet, breakfast area, staff office equipped with computers, printers and scanners for everyone's use, and an experimental radio station.

The lodge contains 12 two-story rooms that can sleep three at a time, each with its own bathroom and kitchenette. Each room opens onto a porch that can be used for outdoor studio space. Residents who prefer to

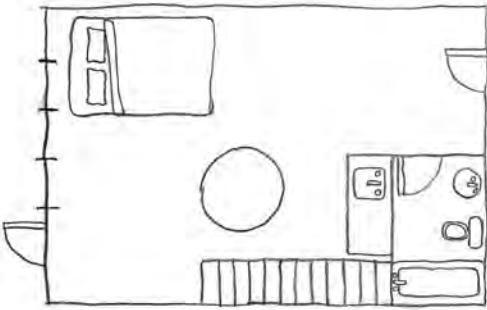
share a bed with a friend or partner can stay in single-bed apartments in a nearby building. Couples are welcome to attend together and can share sleeping accommodations. However, unless all work is collaboratively produced, each person must apply individually.

Unfortunately, due to insurance reasons we cannot accommodate anyone under 18, including children of residents. Because of the animals already on the farm, the property owners cannot allow pets to attend.

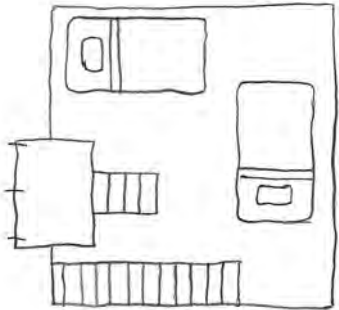




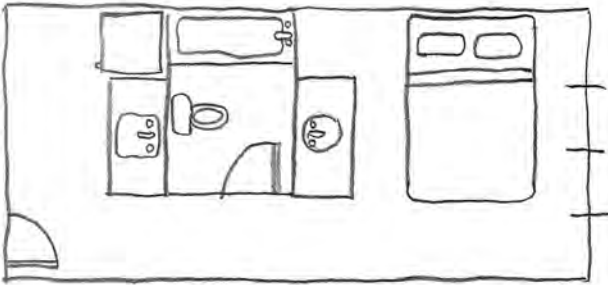
Lodge rooms house 3 residents each, and feature bathrooms & kitchenettes.



FIRST FLOOR



SECOND FLOOR



COUPLES STAY IN PRIVATE APARTMENTS



**STUDIO SPACES**

Spaces within the outdoor and indoor communal work areas are afforded to each resident.



A two-story studio cabin just outside the main lodge holds twelve work areas. Air conditioned and clean, this space is often occupied by folks working in 2D media, but is open to one and all. The open-air wood shop, and the adjacent 1,500 square foot covered outdoor space can be great places to set up work-spaces, especially for those utilizing the wood shop or screen printing area. The

covered porches that wrap around the main lodge are set up with clean white walls and work tables, and can be directly accessed through each apartment in the lodge. Most apartments in the lodge have tables to work at and can be furnished with heavier-duty work tables upon request. These spaces are ideal for those wanting a more private work space.



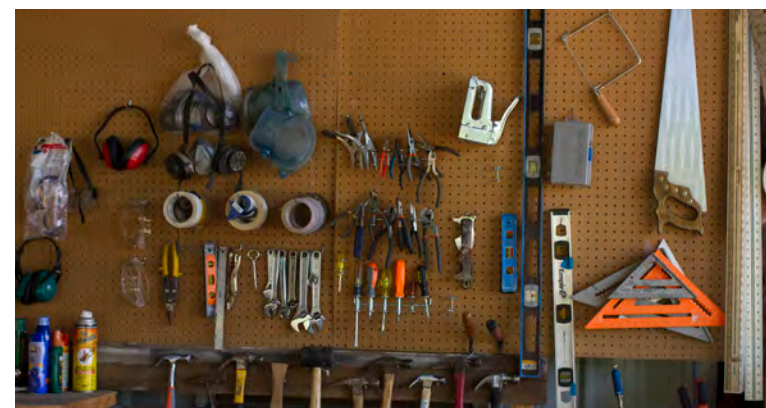
*"My practice will never be the same. I can hardly believe that 2 weeks in the middle of nowhere could change me so much. The critical, creative, and encouraging environment of ACRE is like nowhere else on Earth. I want to live in that space forever..."*

*-former resident*

## THE GROUNDS:

ACRE encourages residents to set out into the sprawling grounds to find new places to be inspired. Artists often hike into the hills, to record sound or video, map the land, or create site-specific installations.

Visitors have come through to lead excursions to forage for dinner or picnic in a field. Wildlife such as trumpeter swans and bald eagles share the landscape with explorers.



**WOODSHOP**

ACRE's woodshop is a 2000 square foot covered, outdoor area with a newly-poured concrete floor, new electric, and lots of work tables & tools.

ACRE's woodshop sits next to a gigantic lumber yard full of old growth timbers and usable scraps from buildings demolished in Chicago and salvaged by Bob Samuelson, one of the owners of the farm. Many residents in the past have requested and been given access to this lumber (sometimes for a small

fee), and have made use of the extra-large timber-cutting tools that the farm retains. The wood shop staff also facilitates other sculptural processes, such as mold making and casting. At least one volunteer technician is always available to advise and assist with residents' projects.



## WOODSHOP EQUIPMENT:

**drill press, table saws,  
band saw, miter saw,  
hand saws, circular saws,  
routers, grinders, belt  
sanders, disk sanders, air  
compressor, planer, lathes,  
cordless drills, wrenches,  
files, chisels, and hardware**

THIS IS A SIMPLIFIED LIST OF AVAILABLE TOOLS, PLEASE CONTACT US FOR MORE  
SPECIFIC INFORMATION.



SCREENPRINTING



Screenprinting workshops and guided assistance from master printers are available to everyone.

Built in the summer of 2011, ACRE's screen-printing studio contains a dark room, exposure unit, vacuum table, dozens of screens, drying equipment, and more. Staffed by a master screen

printer at all times, the lab provides inks, emulsions, transparencies, and other supplies to offer free to any resident that wishes to use them.



Residents are encouraged to bring their own paper, fabric or material to print on, inks they know they will specifically want to work with or other specialty supplies. Access to scanners, computers and printers in other

areas of the farm will be provided for creating images to work with. As with other facilities, there are built-in training sessions for anyone who might be new or rusty to the basics of screenprinting.



**RECORDING STUDIO**

Bands, sound artists, and novices come through the recording studio to work with friendly, experienced engineers.

The residency's recording studio was improved upon in 2011, moving to a new space and taking on three full-time staff members to assist artists and musicians with their recording needs. ACRE provides

not only recording equipment and computers, but many instruments as well. Recording hours in the studio are available for anyone to sign up for, and are facilitated by an expert engineer.



## RECORDING STUDIO EQUIPMENT:

**Audio Technica 4033 microphone and shock mount, Samson CO2 pencil condenser pair, Digital voice recorders, ATR25 stereo condenser microphone, 79 Fender Super Twin amplifier, 67 Gibson melody maker, 60s Pearl drum kit, early 70s Turner instrument mics, oktava Mk-012 Condensor mic, later 80s Ev series drum mics, various sure mics, Alesis Ion Kurzweil K2000, 2 portable sony mini disc recorders with mountable handheld stereo mics, Event active studio monitors '71 sunn scepter amplifier, Avatar 2x12 bass cab, Sunn TC50 guitar amp combo 1x12, Digitech whammy 2nd gen, Electro harmonix memory man, american big muff pi, Crybaby , volume/wah with boost, Cellular automata video synthesizer, Global bass guitar, Epiphone les paul barritone guitar, various pedals and effects**



*“I loved the supportive, DIY atmosphere of ACRE. It really allowed me to experiment, push myself, and try things I had never done before. My time there made a significant impact on my practice by providing an island of time and space so that I could just focus on making.”*

*-former resident*

## BAND CABIN:

We are excited to host 3-4 person bands and collaborative groups in the newly-finished cabin, located about a half-mile from the main lodge, right on the bank of the Kickapoo River.

This private space with a bathroom and kitchenette provides sleeping accommodations and practice space for one band per session.



**A/V + TECH**

The computer lab has an abundance of software for editing photo, sound, & video.

A super-fast and custom-built mac/windows/linux-capable computer with all sorts of video editing and 3D rendering tools is available for residents who sign up to use it. These computers here are available

with a variety of software that can suit artists' needs including Adobe softwares, Ableton, and various other audio editing softwares to experiment with tracks made in the recording studio and other audio files.



## The Art & Technology Lab is a resource for both tech- heads and novices.



ACRE's space for electronics, robotics and 3D prototyping, Art & Tech holds workshops on a variety of subjects that are designed to introduce newbies to electronics. For those with more experience, we try to provide a wide array of tools and equipment and can offer assistance with all kinds of projects. In addition to the things you'd expect to find in any general

purpose electronics lab, some unique capabilities of our space are: 3D printing, the possibility to work with vacuum tubes, and power electronics for various types of lighting. We stock all the common electronic components like resistors, capacitors, discrete transistors and commonly-used ICs.

## A/V + TECH EQUIPMENT:

**soldering irons, circuit-board prototyping tools, digital multimeters, LCR meter, analog oscilloscope (100 MHz), digital storage oscilloscope (50 MHz), arbitrary waveform generator (25 MHz), logic analyzer (75 MHz), vector network analyzer (60 MHz), RF power meter (125 MHz), power supply (500 V). We also have a 3D printer, the Reprap Huxley, which can print objects up to 5.5" x 5.5" x 4.3" in either ABS or PLA plastic (various colors of plastic can be ordered; contact us if you would like to arrange for this).**

THIS IS A SIMPLIFIED LIST OF AVAILABLE TOOLS, PLEASE CONTACT US FOR MORE SPECIFIC INFORMATION.



**PROGRAMMING**



Each year we invite several mid-career and established artists and thinkers to come stay and conduct studio visits, give lectures, and offer various unique workshops. They lead excursions into neighboring areas, stage participatory

performances, and offer other, more experimental programming. There are up to four visiting artists on the property at a given time, each staying for two to six days.



*“As someone who lives in a city and works full-time, coming to ACRE was a rejuvenating and productive experience. Unlike other residencies, ACRE creates an environment that is open to everyone- you can reflect, you can discuss, you can learn and you can produce.”*  
-former resident

## WORKSHOPS:

Visitors, residents and staff also share skills with each other via informal workshops. These have included workshops on how to make unusual meals, craft digitally-infused fiber

work, or use different softwares. Residents and staff sometimes organize reading groups, field trips, or critiques to supplement visiting artist-led programming and studio visits.

**Visiting bands & performers  
come through on the weekends  
to play concerts & interact with  
the residency community.**





**KITCHEN**



Scattered throughout the grounds for most of the day, all residents and staff come together for exceptional meals and conversations.

Breakfast is provided each morning in the lodge, available from 8-10am, continental style. Residents eat lunches and dinners communally in a large indoor/outdoor dining hall/kitchen. Created by a large team of

chefs and assistants, each meal is made from locally-sourced meats, veggies, and dairy. Options for vegans and vegetarians are always available, and food is prepared specially for those with other dietary restrictions.



## A NOTE FROM OUR CHEFS:

We hope to make food a unique and integral aspect of the residency experience. We are a volunteer-artist-run kitchen and strive to provide an interesting, healthy and diverse menu crafted from local, seasonal and sustainable foods.

While part of our mission is to use consideration in all aspects of our sourcing, buying, and recipe selection we also work toward developing a greater relationship between our artists and the fascinating subject of food. As our kitchen grows we are also incorporating exploratory programming offering our residents the opportunity to experience historical, intellectual, problematic, and strange aspects of eating.

Every year the kitchen staff carefully crafts a menu to accommodate vegans, vegetarians, carnivores and gluten allergies while showcasing the

bountiful seasonal produce, cheese and meats found in the Driftless Region of Southwest Wisconsin. Meals range from truffle pea soup to bahn mi sandwiches, orange chipotle glazed shortribs and beet falafal to coconut-lime potatoes.

Most food at ACRE is in fact sourced locally from providers with whom the kitchen staff has developed relationships and are proven to use sustainable and organic practices. Our pork and chicken products are animal welfare-certified, the free-range beef grazes right on the land where ACRE residents live and work and we grow most of the herbs we use ourselves! We also try to eliminate processed, packaged products and big box shopping as much as possible making our own pizza dough, pie crusts, stocks, seitan, dressing and many breads ourselves.

Supporting the local economy and reducing our carbon footprint is an important part of how our kitchen is structured but we are also interested in bringing awareness to the many nuances of eating. We strive through our menu construction to make sure the food is delicious but also interesting and varied allowing residents to enjoy surprising new flavors and foods.

As artists who are interested in food, we try to apply aspects of artistic pursuit into our menus and integrate some of our own conceptual interests by curating an experience of exploration, appreciation and learning through workshops, lectures, tastings, panel discussions and special events. In 2011 our visiting artists lead groups on a hike to find wild watercress, chickweed and dock before working with kitchen staff to transform them

into pesto, cheese-stuffed lillies and salad. Residents got to learn about offal meats, making pate and sampling heart skewers, duck tongues and goat testicles. There was a panel discussion between three very different food providers we work with; an Amish farmer, a sustainable rancher and a buyer for the food co-op about food/farming policy, and one afternoon artists picnicked under a tree sipping micro-brews paired with Wisconsin artisan cheeses and fruits, listening to an expert talk about the evolution of both cheese and beer and why they go together so well.

We are always trying to continually find new ways to engage residents and staff in the dialogue related to food; questioning and considering consumption and preparation and the greater impact and issues related to its history.



**YEAR-ROUND SUPPORT**



Each resident is offered a curated exhibition opportunity in Chicago. These include solo shows, two-person shows, and group shows.

These shows are held at ACRE's gallery in the Pilsen neighborhood of Chicago or at one of ACRE's partner galleries. Shows at ACRE Projects last two weeks and can be used for a typical art exhibition or any project,

performance, gathering, lecture or other experimental event. Residents participating in duo shows are paired by a curator who will provide support including studio visits and assistance with show text.

ACRE's partner galleries, all respected Chicago alternative spaces, invite dozens of residents each year to show with them.

The list of partner galleries grows and changes each year. In the past they have included such spaces as Roxaboxen, New Capital, Co-Prosperty Sphere, Roots + Culture, Heaven Gallery, Johalla Projects, Plains Project, ADDS DONNA, and LVL3. Partner galleries choose artists they would like to work with from their ACRE applications and

determine the date and length of the show as well as whether it will be a solo or group show. Once the partner galleries have chosen the artists they want to work with, they will communicate directly with the artist in regards to planning the show. ACRE handles the show's publicity, and the residents handle the install.





In addition to exhibitions in Chicago, residents have the opportunity to join **ACRE** at various art fairs and receive webspace.



ACRE shows resident work in contemporary art fairs such as NADA, EXPO, NEXT and MDW in Chicago and elsewhere.

Residents will get user-friendly web space to upload work samples, information, writing or other work onto ACRE's online flatfile.

This is a space that ACRE uses to direct curators and critics to, and one that the artists can use either experimentally or as a website.

ACRE is constantly working with other institutions and organizations to create different opportunities for our artists.



ACRE's volunteer staff is dedicated to making the residency a rewarding and unforgettable experience.



FIND OUT MORE AT [ACRERESIDENCY.ORG](http://ACRERESIDENCY.ORG)