

# ACCREE

*Artists'  
Cooperative  
Residency &  
Exhibitions*

**ACRE's summer residency program takes place each summer in rural Southwest Wisconsin. Run by a large community of volunteers, our program is designed to help fellow emerging artists develop, present, and grow their creative practices.**



# Artists' Cooperative

ACRE comprises a growing network of emerging artist peers, established artists, curators, administrators, and gallerists.

## Residency

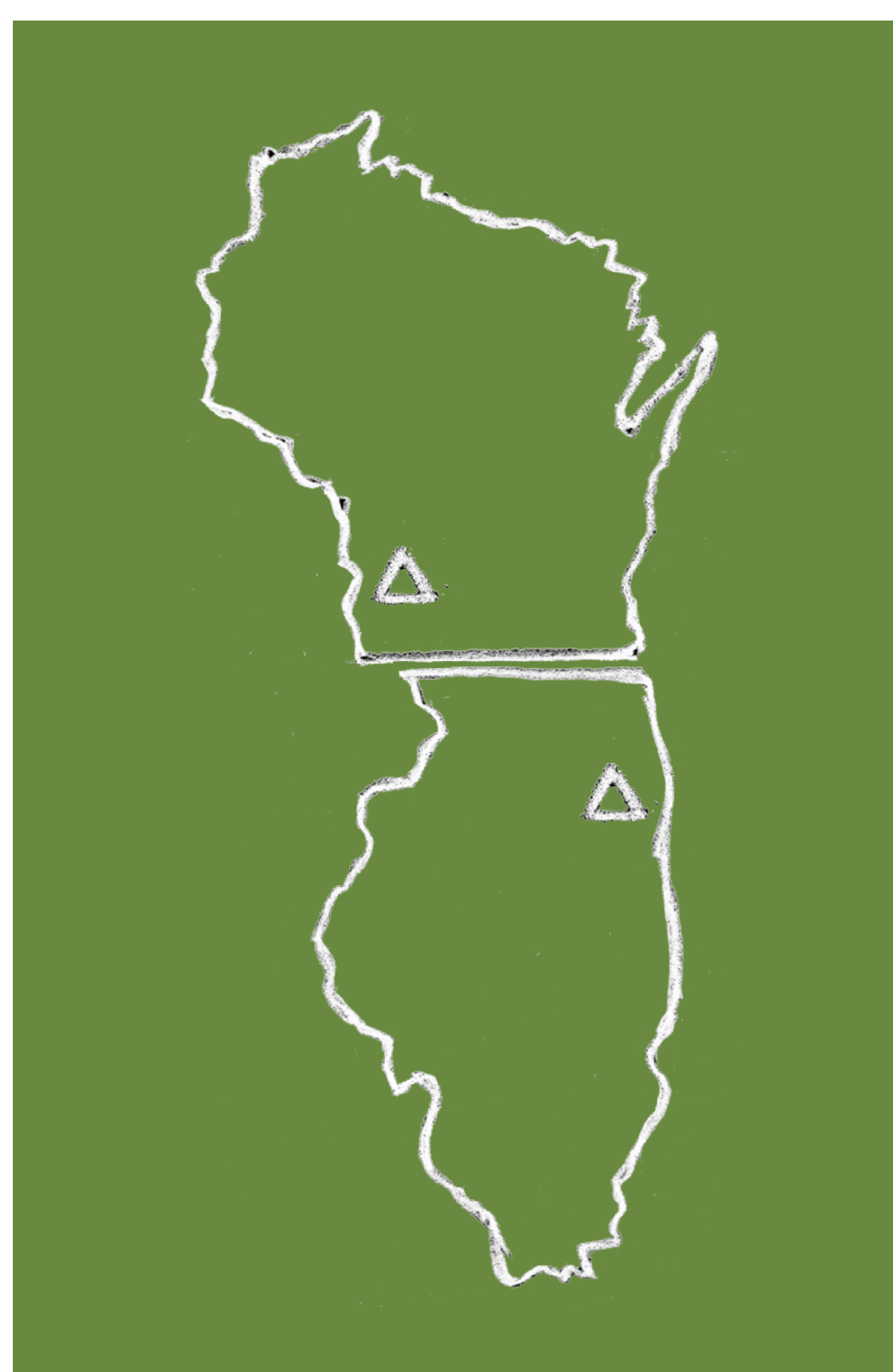
Our residency hosts 25-30 artists per session, and offers room & board with comfortable sleeping accommodations and chef-prepared meals.

Set on 1000 acres of Wisconsin's driftless region, communal studio spaces compliment access to facilities including a wood shop, screen-printing studio, fibers studio, ceramics studio, recording studio and art & tech lab.

Residents can choose to participate in studio visits with a variety of established artists, curators and experienced educators, along with workshops, lectures, concerts, reading groups, critiques and other programming throughout each session.

## Exhibitions

Following the residency program, residents are offered the opportunity for an exhibition at one of ACRE's partner galleries or to work with one of our curatorial fellows to produce an exhibition at ACRE Projects. All alumni are also given web space on ACRE's digital flatfile, which is used for consideration for participation in art fairs and other opportunities.





SESSION 1: JULY 2-15

SESSION 2: JULY 19-August 1

SESSION 3: AUGUST 6-19

SESSION (14 DAYS): \$700

FINANCIAL AID:

Full and partial scholarships are available. Over a third of residents will receive some sort of financial aid.

\* RATES SUBJECT TO CHANGE



## ACCOMMODATIONS

## Residents live together in a unique building made from salvaged materials.

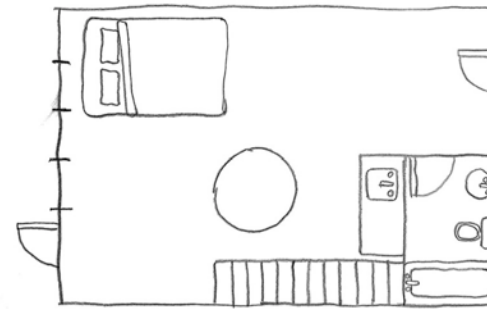
Most residents stay in the sprawling Steuben Lodge, which houses around 40 people and contains a large central area that includes a library with wireless internet, breakfast area, and computers, printers and scanners for everyone's use.

The lodge contains 12 two-story rooms that can sleep three at a time, each with its own bathroom and kitchenette. Each room opens onto a porch that can be used for outdoor studio space. Residents who prefer to share a bed with a friend or partner can stay in single-bed apartments in a nearby building.

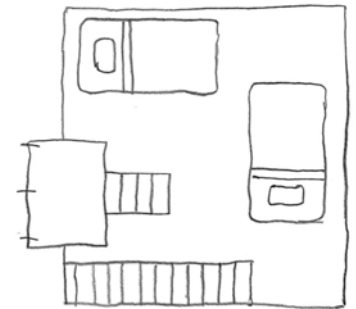
Couples are welcome to attend together and can share sleeping accommodations. However, unless all work is collaboratively produced, each person must apply individually. At this time no single occupancy rooms are available. Unfortunately, due to insurance reasons we cannot accommodate anyone under 18, including children of residents. Because of the animals already on the farm, the property owners cannot allow pets to attend. Please note that as we are located in a very rural area, internet can be slow and unreliable at times, especially during times of heavy usage.



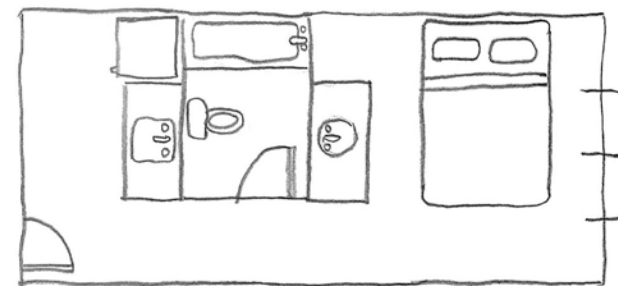
Lodge rooms house 3 residents each, and feature bathrooms & kitchenettes.



FIRST FLOOR



SECOND FLOOR



COUPLES STAY IN PRIVATE APARTMENTS



COMMUNAL STUDIO SPACES





Spaces within the outdoor and indoor communal work areas are afforded to each resident.

Our newly renovated Chalet Studio can accommodate a dozen workspaces and is also home to the newly-launched fibers studio. The open-air wood shop, and the adjacent covered outdoor area can be great places to set up work spaces, especially if you'll be utilizing the wood shop or screen printing area. Those working primarily with technology are encouraged to set up in the Art & Tech studio building across from the lodge building.

The covered porches that wrap around the main lodge are set up with clean white walls and work tables, and can be directly accessed through each apartment in the lodge. Most apartments in the lodge have tables to work at and can be furnished with heavier-duty work tables upon request. These spaces are ideal for those wanting a more private work space. The majority of work spaces are intended to be shared.





*“My practice will never be the same. I can hardly believe that 2 weeks in the middle of nowhere could change me so much. The critical, creative, and encouraging environment of ACRE is like nowhere else on Earth. I want to live in that space forever...”*

*-former resident*

## THE GROUNDS:

ACRE encourages residents to set out into the sprawling grounds to find new places to be inspired. Artists often hike into the hills, to record sound or video, map the land, or create site-specific installations.

Visitors have come through to lead excursions to forage for dinner or picnic in a field. Wildlife such as trumpeter swans and bald eagles share the landscape with explorers.





WOODSHOP

ACRE's woodshop is a 2000 square foot covered, outdoor area with a newly-poured concrete floor, new electric, and lots of work tables & tools.

ACRE's woodshop sits next to a gigantic lumber yard full of old growth timbers and usable scraps from buildings demolished in Chicago and salvaged by Bob Samuelson, one of the owners of the farm. Many residents in the past have requested and been given access

to this lumber (sometimes for a small fee). The wood shop staff also facilitates other sculptural processes, such as mold making and casting. At least one volunteer technician is always available to advise and assist with residents' projects.



## WOODSHOP EQUIPMENT:

**Jointer (6”), Surface Planer (12”), Pancake Air Compressor , Contractor Table Saw (10”), Drill Press, Sliding Miter Saw, Oscillating Belt Sander, Assorted Clamps, Assorted Hand Tools, Assorted Nail Guns, Shop Vice, Soldering Iron, Cordless Drills, Jigsaws, Circular Saw, Palm Sanders, Bench Grinder, Hand-held Grinder, Drill Bits, Forstner Bits, Spade Bits, Assorted Hardware, Wood Glue, Table Saw Accessories: Cross Cut Sled, Miter Gauge**

**note: residents planning to make heavy use of the woodshop should bring or be prepared to buy or replace consumable items such as screws and sandpaper**



**SCREENPRINTING**



Screenprinting workshops and guided assistance from master printers are available to everyone.



Built in the summer of 2011, ACRE's screen-printing studio contains a dark room, exposure unit, printing stations with hinge clamps, dozens of screens, drying equipment, and more. Staffed

by a master screen printer at all times, the lab provides limited inks, emulsions, transparencies, and other supplies to offer free to any resident that wishes to use them.



Residents who plan to print a lot are encouraged to bring their own paper, fabric or material to print on, inks they know they will specifically want to work with or other specialty supplies. Access to scanners, computers and

printers in other areas of the farm will be provided for creating images to work with. As with other facilities, there are built-in training sessions for anyone who might be new or rusty to the basics of screenprinting.



**SOUND STUDIO**

Musicians, sound artists, and novices come through the recording studio to work with friendly, experienced engineers.

ACRE's sound department supports live performance, field recording and an isolated studio environment. With digital and analog recording capabilities, an expanding collection of microphones, and a nuanced and interesting contribution of equipment

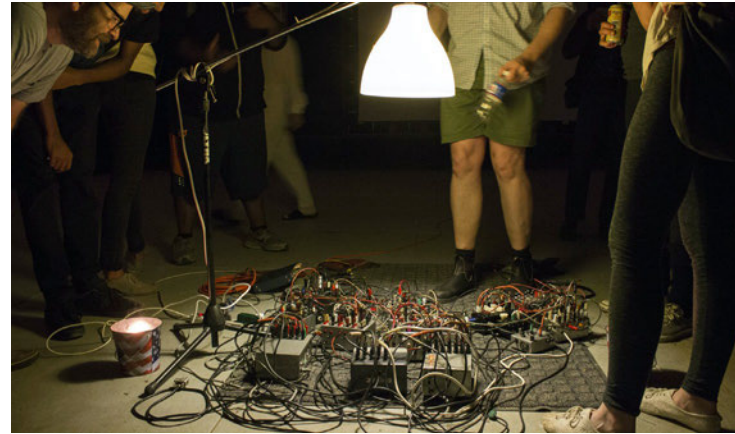
and software, our staff of experienced and friendly engineers will be able to provide insight and assistance on almost any sound based project, as well as, workshops and tutorials on equipment, software, and instrument.



## RECORDING STUDIO EQUIPMENT:

**Audio Technica 4033 microphone and shock mount, Samson CO2 pencil condenser pair, ATR25 stereo condenser microphone, early 70s Turner instrument mics, oktava Mk-012 Condensor mic, later 80s Ev series drum mics, 2 Sure SM57 mics, 60s Pearl drum kit, Alesis Ion Kurzweil K2000, Event active studio monitors, Sunn TC50 guitar amp combo 1x12, Cellular automata video synthesizer, Global bass guitar, various effects pedals, Zoom h4n field recorder, Ka\$ino 8x10 combo amplifier, Fender Hot Rod Deluxe 1x10 combo amplifier**

THIS IS A SIMPLIFIED LIST OF AVAILABLE EQUIPMENT, PLEASE CONTACT US FOR MORE SPECIFIC INFORMATION.



**A/V + TECH**

The A/V + Tech lab has an abundance of software for editing photo, sound, & video.

Moved to a larger building in 2013, ACRE's Audio Visual Technology lab is a hub of activity at the farm. ACRE staff has custom built super-fast mac/windows/linux-capable computers with all sorts of video

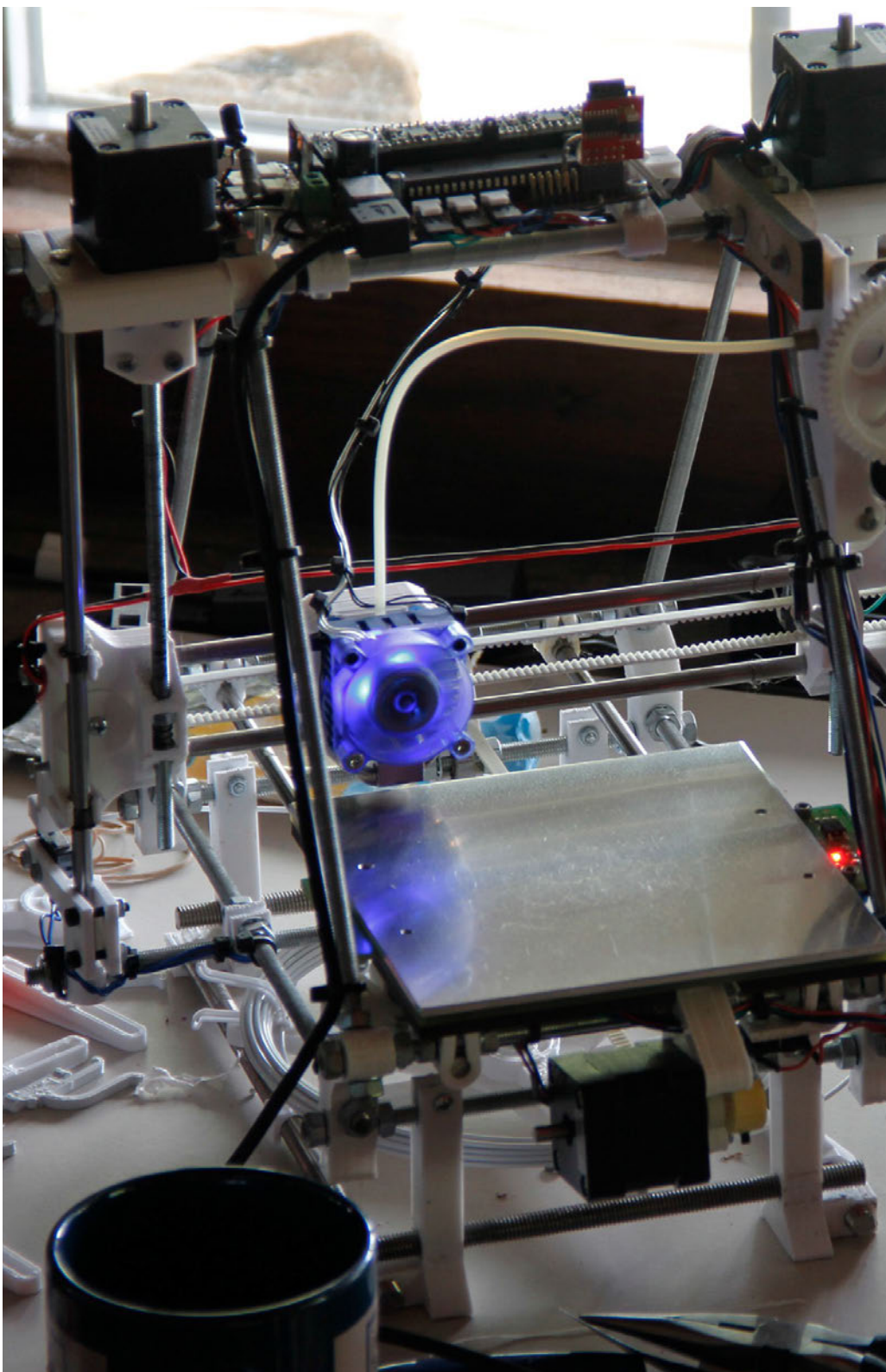
and image editing software, as well as 3D rendering tools. Audio editing software is also available here, allowing artists to experiment with tracks made in the recording studio and elsewhere.



The A/V + Tech lab is a resource for both experienced tech-heads and beginners alike.

ACRE's space for electronics, robotics and 3D prototyping holds workshops on a variety of subjects that are designed to introduce newbies to electronics and advanced software. For those with more experience, we try to provide a wide array of tools and equipment and can offer assistance with all kinds of projects. In addition to

the things you'd expect to find in any general purpose electronics lab, some unique capabilities of our space are: 3D printing and scanning, basic robotics, and power electronics for various types of lighting. We stock all the common electronic components like resistors, capacitors, discrete transistors and commonly-used ICs.

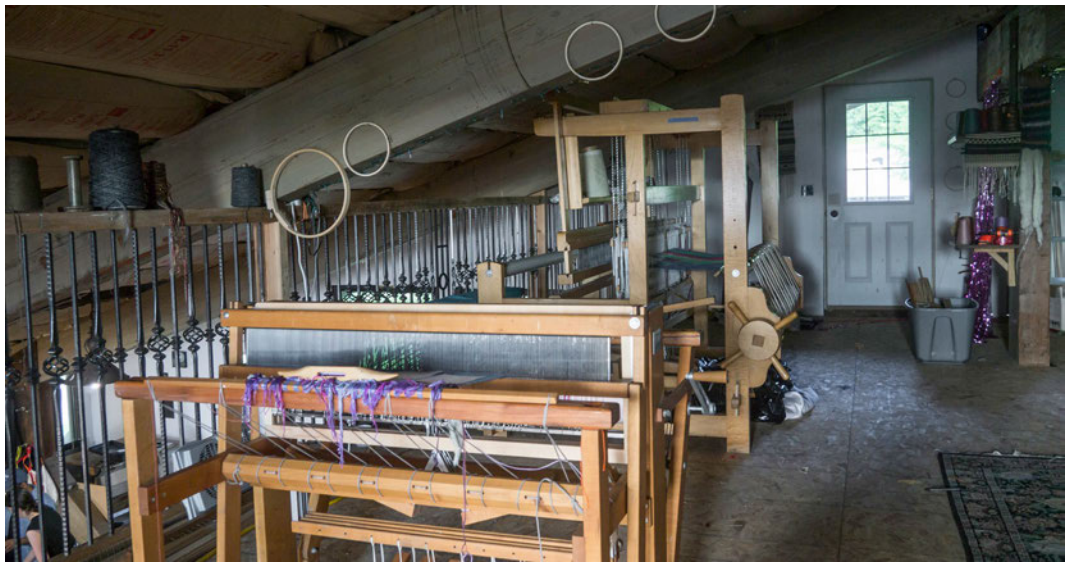




## A/V + TECH EQUIPMENT:

**2 Fast Mac/Windows/Linux Capable computers with full range of up-to-date software, Canon 7D Camera, various lenses, video and photo tripods, 3 video projectors, Tascam DR-40 4-Track Handheld Digital Audio Recorder, soldering irons, circuit-board prototyping tools, Arduinos, electronics test instruments (oscilloscope, etc.), power supplies, Reprap Huxley 3D Printer (can print objects up to 5.5" x 5.5" x 4.3" in PLA plastic), Cubify Sense 3D Scanner**

THIS IS A SIMPLIFIED LIST OF AVAILABLE TOOLS, PLEASE CONTACT US FOR MORE SPECIFIC INFORMATION.



**FIBERS**

## Residents can learn to weave on a number of different types of looms.

ACRE's Fiber Studio was introduced in 2014 and is lofted above the general studio area in The Chalet building. The studio boasts three large floor looms and three tabletop looms with all the accessories needed to warp and weave. While we provide a variety of yarn, it is recommended that you supply your own for large projects or if you need a specific color or fiber. The Fiber Studio is also equipped with a sewing machine and materials

for sewing, embroidery, and crochet. A small dye studio was added in 2016 allowing for working with natural dyes. A Fiber Studio tech is available to help with fiber-related projects and will provide weaving workshops and other fiber related tutorials to interested residents. Also consider working in conjunction with the printmaking facilities, which are capable of printing on fabric.



## FIBERS EQUIPMENT:

**4 Harness Rug Weaving Loom, 8 Harness Standing Loom, 3 4-Harness Tabletop Loom, Warping Board, Boat Shuttles, Rag Shuttle, Flat Shuttles, Bobbins, Reed Hook, Pick-up Sticks, Various Yarn, Fabric Scissors, Scissors, Various Fabric + Scraps, Drop Spindle, Various Raw Wool, Embroidery Floss, Various Embroidery Hoops, Sewing Machine, Various Thread, Various Needles, Pins, Various Crochet Hooks, Iron, Ironing Board**

THIS IS A SIMPLIFIED LIST OF AVAILABLE TOOLS. PLEASE CONTACT US FOR MORE SPECIFIC INFORMATION.



**CERAMICS**

Access to electric kilns and basic ceramics supplies, clay and glazes are provided in our newly created Ceramics Studio.



Established in 2015, the ceramics studio can accommodate those with previous experience and those new to working with ceramics. This summer we will be firing to cone 04 and cone 6 with two electric kilns that can handle pieces 24" tall and 21" in diameter. Residents interested in using the ceramics studio are

highly encouraged to bring their own clay and glaze supplies if possible. A ceramics staff person will be there to lead workshops, assist with projects and manage the studio. Please note that due to drying and firing times, the ceramics studio should be most utilized at the beginning of the residency session.

## CERAMICS EQUIPMENT:

**Cress FX-27P electric kiln,  
Skutt KM-1027 electric  
kiln, Brentpotter's wheel,  
Kickstyle potter's wheel,  
hand tools, earthenware  
white clay, stoneware white  
clay, tan tableware clay, a  
variety of low fire, midrange,  
homemade and commercial  
glazes**



**PROGRAMMING**





Each year we invite several mid-career and established artists and thinkers to come stay for a week and conduct studio visits, give lectures, and offer various unique workshops. They lead excursions into neighboring areas, stage participatory performances,

and offer other, more experimental programming. There are four visiting artists, critics, and curators on the property at a given time, lending the benefit of their experience and feedback to residents and often working on projects of their own.



## WORKSHOPS:

Visitors, residents and staff also share skills with each other via informal workshops. These have included workshops on how to make unusual meals, craft digitally-infused fiber

work, or use different softwares. Residents and staff sometimes organize reading groups, field trips, or critiques to supplement visiting artist-led programming and studio visits.

*“As someone who lives in a city and works full-time, coming to ACRE was a rejuvenating and productive experience. Unlike other residencies, ACRE creates an environment that is open to everyone- you can reflect, you can discuss, you can learn and you can produce.”*  
*-former resident*

**Visiting bands & performers  
come through on the weekends  
to play concerts & interact with  
the residency community.**





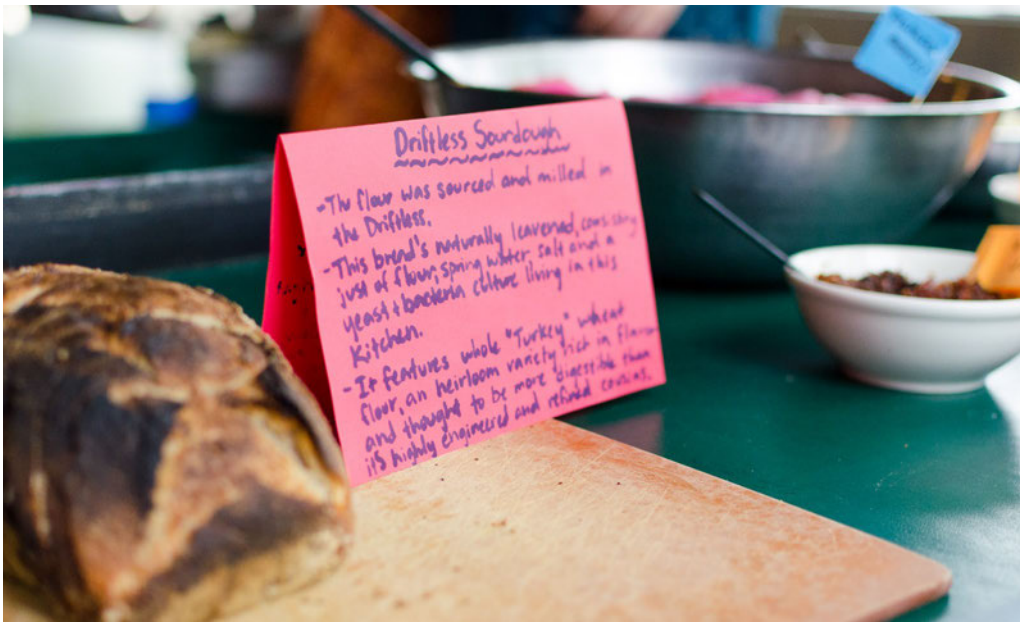
KITCHEN

Scattered throughout the grounds for most of the day, all residents and staff come together for exceptional meals and conversations.

Breakfast is provided each morning in the lodge, available from 8-10am, continental style. Residents eat lunch and dinner communally in a large indoor/outdoor dining hall/kitchen. Created by a large team of chefs

and assistants, each meal is made from locally-sourced meats, veggies, and dairy. Options for vegans and vegetarians are always available, and food is prepared specially for those with other dietary restrictions.





## A NOTE FROM OUR CHEFS:

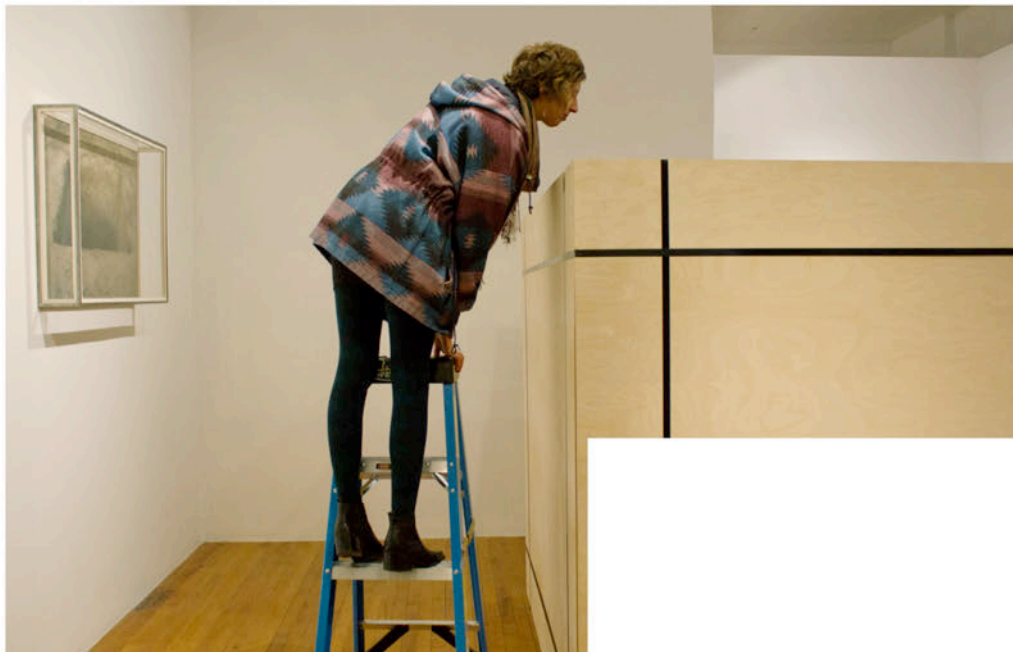
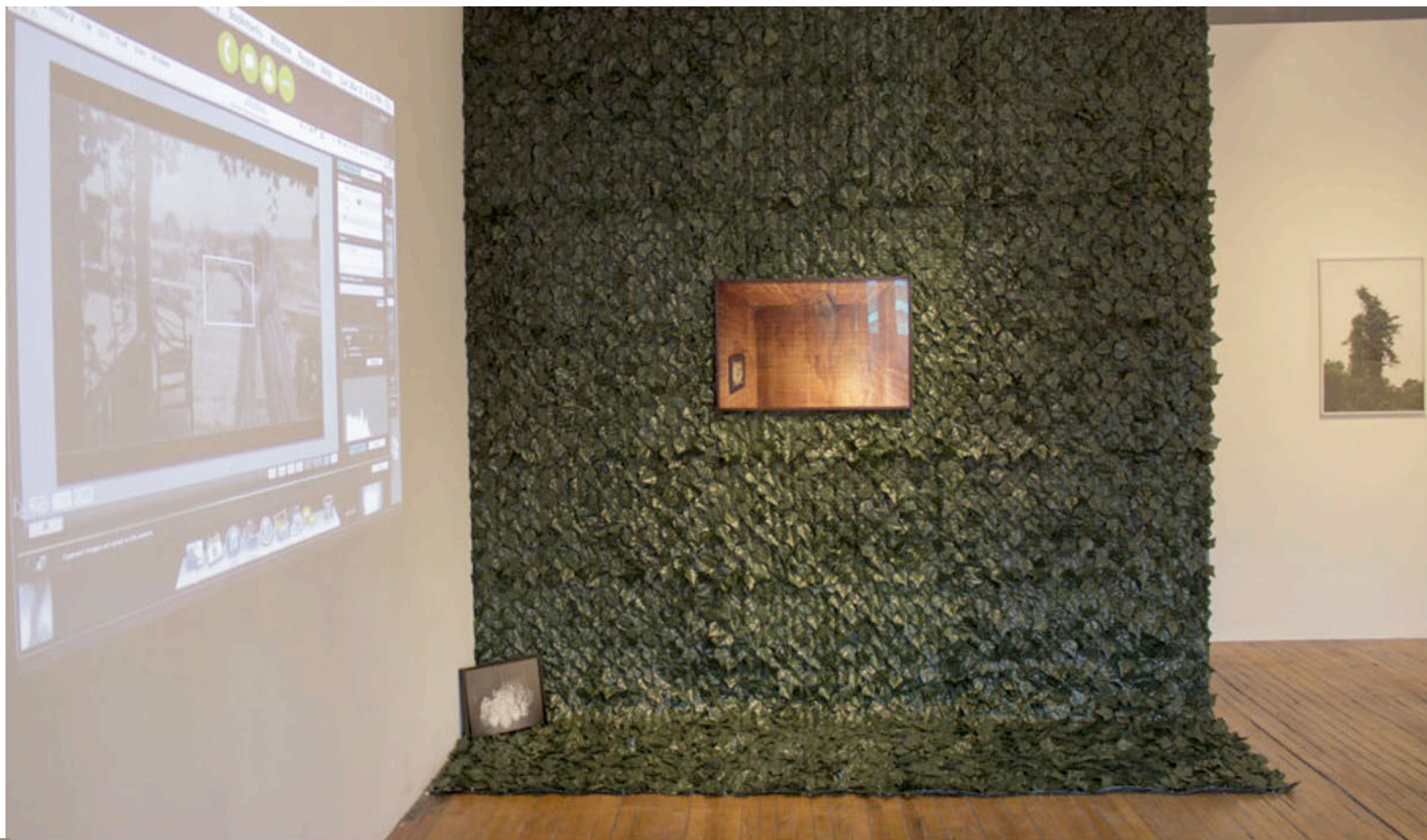
Food is an integral aspect of the residency experience at ACRE. We are a volunteer, artist-run kitchen dedicated to providing healthy meals and supporting sustainable food producers around the Driftless region of southwest Wisconsin. Leading up to the residency, the kitchen staff works as a team to design a diverse menu including options at every meal to accommodate dietary restrictions. Our collective passion for quality and the opportunity to learn from each other motivates us to make as much as possible from scratch.

As our kitchen grows we are also incorporating programming for staff and residents to explore historical, aesthetic, and political dimensions of eating. As artists who are interested in food, we try to integrate some of our

own conceptual interests by curating an experience of appreciation and learning through workshops, lectures, tastings, tutorials and panel discussions. Past events have included thorough foraging walks, debates about sustainable agriculture between local Amish and certified organic farmers, beer and cheese tastings and lessons on pasta making, nettle harvesting and butchering techniques.

Whether it's a debate about the efficacy or ethics of food production, experimenting with new culinary techniques, or sharing an old family recipe, the ACRE Kitchen is constantly seeking to expand our community's experience of the food we share at the table.





YEAR-ROUND SUPPORT

Residents are offered a curated exhibition opportunity. These range from traditional exhibitions to one-off performances and special projects.

These shows are held at ACRE's gallery in the Pilsen neighborhood of Chicago or at one of ACRE's partner galleries. Exhibitions at ACRE Projects are curated by one

of our curatorial fellows. These promising emerging curators provide a range of support including studio visits, assistance with show text, and exhibition design.





ACRE's partner galleries, all respected alternative spaces in Chicago and across the country, invite dozens of residents each year to show with them.

The list of partner galleries grows and changes each year. In the past they have included such spaces as Roxaboxen, Devening Projects, Slow Gallery, New Capital, Co-Prosperity Sphere, Roots + Culture, Heaven Gallery, Johalla Projects, Plains Project, ADDS DONNA, and LVL3 in Chicago and Under The Pines, The Luminary, Plug Projects and Lease Agreement elsewhere in the country.. Partner galleries choose artists they

would like to work with from their ACRE applications and determine the date and length of the show as well as whether it will be a solo or group show. Once the partner galleries have chosen the artists they want to work with, they will communicate directly with the artist in regards to planning the show. ACRE handles the show's publicity, and the residents handle the install.





ACRE's volunteer staff is dedicated to making the residency a transformative and unforgettable experience.

FIND OUT MORE AT [ACRERE.SIDENCY.ORG](http://ACRERE.SIDENCY.ORG)

*ACRE is a 501c3 non-profit supported in part by The National Endowment for the Arts, The Illinois Arts Council, The Donnelley Foundation, The Joyce Foundation, The Dew Foundation and through the generosity of our supporters and volunteer staff.*