

Home, Place and Positionality

Fatima Laster & Haerim Lee

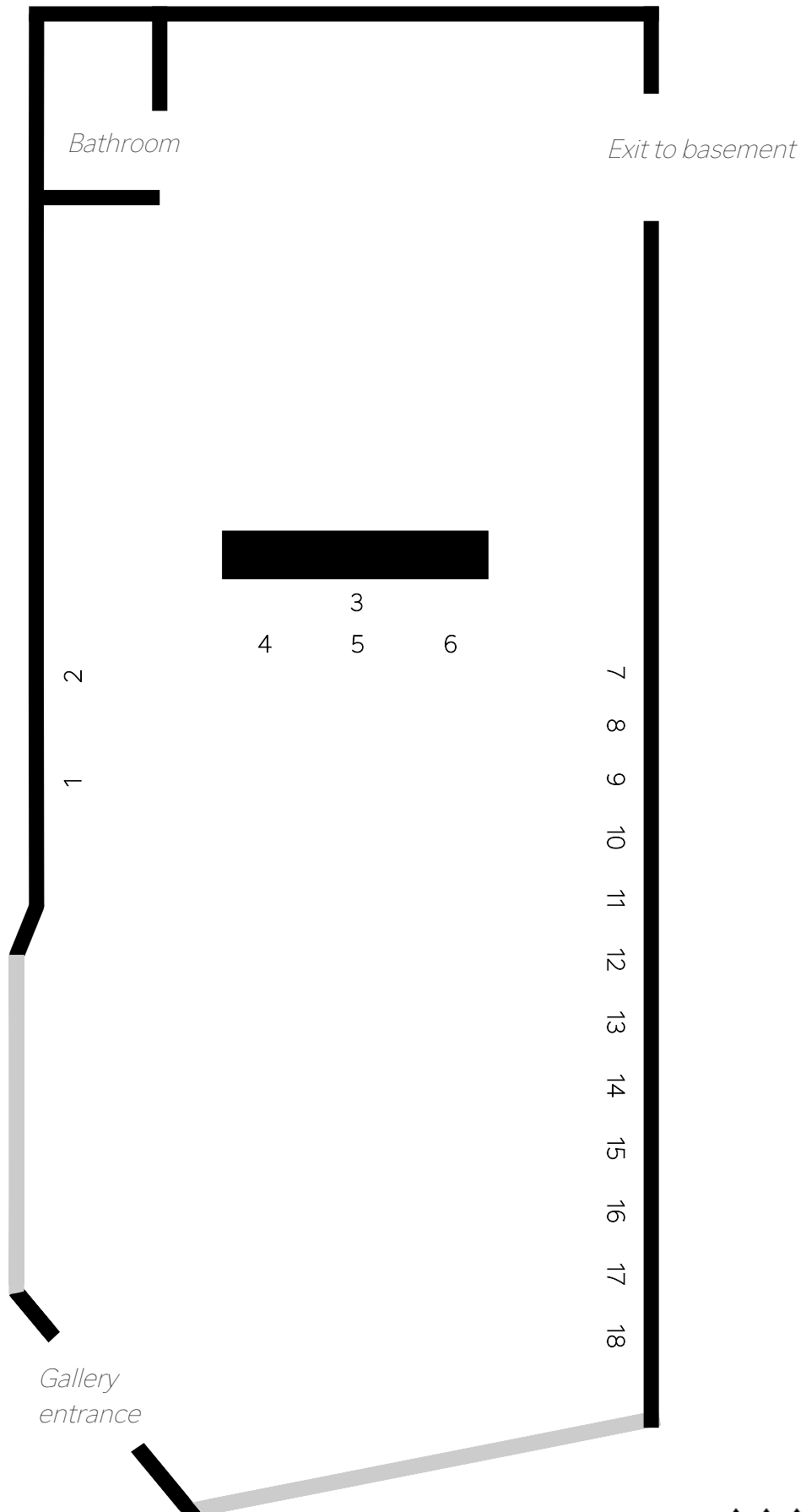
ACRE Projects
April 25 through May 30

Home, Place and Positionality is a two-person, trans-cultural exhibition featuring South Korean-born, Haerim Lee (Chicago, IL) and North American-born, Fatima Laster (Milwaukee, WI). Lee's small-scale weaving paintings that reflect site-specific materials and memories of Chicago and Laster's "America Dreaming" series- 2-D mixed media home constructions incorporating obstructed family photos from gentrification-threatened childhood residences- intermix to visually address how their disparate birth geographies and chosen and forced relocation influence and challenge the notion of home, belonging and racial and cultural identity. Laster's and Lee's distinct art approaches intersect further with intimately curated family photo albums documenting their personal home stories and journeys that allowed their culturally contrasting paths to cross.

About the Artists

Haerim Lee's art stimulates dialogue with communities through painting, public murals, ceramics, artist books, and photography. Her practice is rooted in ethnographic research and investigating the history of architectural sites—such as the Metropolitan Correctional Center in Chicago, Cabrini Green, or the murals on the South Side of Chicago or in Gary, Indiana. Originally from South Korea, a monoethnic country, she is interested in multi-racial dynamics, particularly in the South Side of Chicago where she resides. Her process involves generating thinking about power dynamics, personal stories, and creating understanding together.

Fatima Laster is a self-taught interdisciplinary visual artist, curator and owner-operator of 5 Points Art Gallery + Studios. With a Black American vantage point, Laster's independent and communal practice broaches social-political subject matter (i.e. racism, sexism, classism, cultural appropriation, housing/land appropriation/displacement also known as "gentrification," etc.), producing resistance art imbued with humor or irony in an attempt to disarmingly reveal rejected or overlooked perspectives and people.



Works 1 -6 by Fatima Laster
Works 7 - 18 by Haerim Lee
All works created in 2025

1. *Love is a House - 3369 N. MLK Jr. Dr.*
Mixed-media painted collage on tar paper
and home insulation board
48 x 36 x 2 inches
2. *Love is a House - 2520 N. 10th St.*
Mixed-media painted collage on tar paper
and home insulation board
47.5 x 45 x 2 inches
3. *America Dreaming in Living Color 1*
Painted collage and fabric on canvas in
gilded frame
29.25 x 41.25 inches framed
4. *America Dreaming in Living Color 2*
Painted collage and fabric on canvas in
gilded frame
11.5 x 13.5 inches framed
5. *America Dreaming in Living Color 3*
Painted collage and fabric on canvas in
gilded frame
10.5 x 12.5 inches framed
6. *America Dreaming in Living Color 4*
Painted collage and fabric on canvas in
gilded frame
11.75 x 13.75 inches framed
7. *04322 no.4, (celadon dream)*
Weaving canvas, sand and rocks from
Youngsan, Seoul, South Korea
8 x 8 inches
8. *04322 no.3 (celadon dream)*
Weaving canvas, sand and rocks from
Youngsan, Seoul, South Korea
8 x 8 inches
9. *04322 no.2 (celadon dream)*
Weaving canvas, sand and rocks from
Youngsan, Seoul, South Korea
8 x 8 inches
10. *04322 no.1, (celadon dream)*
Weaving canvas, sand and rocks from
Youngsan, Seoul, South Korea
8 x 8 inches
11. *60615 no.4 (pebble beach)*
Weaving canvas, sand and rocks from 57th
Street beach
8 x 8 inches
12. *60615 no.3 (pebble beach)*
Weaving canvas, sand and rocks from 57th
Street beach
8 x 8 inches
13. *60615 no.2 (pebble beach)*
Weaving canvas, sand and rocks from 57th
Street beach
8 x 8 inches
14. *60615 no.1 (pebble beach)*
Weaving canvas, sand and rocks from 57th
Street beach
8 x 8 inches
15. *60610 gold no.3*
Weaving canvas, sand and rocks from 617
W. Evergreen Ave
8 x 8 inches
16. *60610 gold no.2*
Weaving canvas, sand and rocks from 617
W. Evergreen Ave
8 x 8 inches
17. *60610 gold no.1*
Weaving canvas, sand and rocks from 617
W. Evergreen Ave
8 x 8 inches
18. *60615, 04322, and 60610 (gold)*
Weaving canvas, sand and rocks from 617
W. Evergreen Ave
12 x 12 inches