



ACRE's residency program
takes place each summer in rural
Southwest Wisconsin.

Run by a large community of
volunteers, our program is designed
to help emerging artists develop,
discuss, and present their creative
practices.



ACRE Rentals & Retreats

ACRE comprises a growing network of emerging artist peers, established artists, curators, administrators, and gallerists.

Set on 1000 acres in Wisconsin's Driftless Area ACRE can host 10-20 visitors for individual rentals or group retreats. ACRE's Rentals & Retreats offer room & board with comfortable sleeping accommodations and chef- prepared meals.

Rentals include use of our communal studio spaces. For an additional cost visitors can access to facilities and materials including a wood shop, screen-printing studio, fibers studio, ceramics studio, sound studio and art & tech lab.





SUMMER 2023

AVAILABLE RENTAL DATES:

JUNE 2 - 6

JULY 27 - AUGUST 13

AUGUST 25 - SEPTEMBER 17

COST PER NIGHT: \$200 (INDIVIDUALS)

BASE COST INCLUDES ACCOMODATIONS AND 2 MEALS.

SPECIAL PRICING IS AVAILABLE FOR NON PROFITS GROUPS,
LET US HELP TAILOR A PACKAGE TO SUIT YOUR GROUP'S
NEEDS

*ADDITIONAL FEES APPLY FOR HOUSEKEEPING SERVICES,
USE OF OUR STUDIOS AND TECHNICAL FACILITIES, AND
SUPPORT FROM STUDIO STAFF

EMAIL US AT INFO@ACRERESIDENCY.ORG



ACCOMMODATIONS

Visitors live together in a unique building made from salvaged materials.

Most visitors stay in the sprawling Steuben Lodge, which contains a large central area that includes a artists' book library, access to wireless internet, breakfast area, and computers, printers and scanners for use.

The lodge contains 10 two-story rooms that can sleep three at a time, each with its own bathroom and kitchenette.

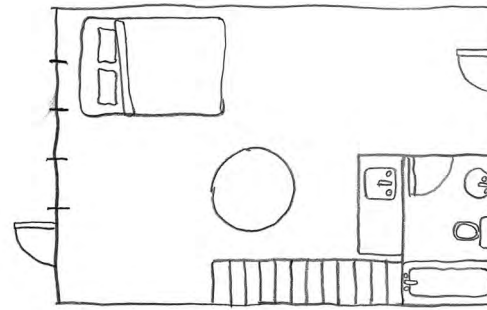
Each room opens onto a porch that can be used for outdoor studio space. Residents who prefer to share a bed with a friend or partner can stay in single-bed apartments in a nearby building.

Please note that as we are located in a very rural area, internet can be slow and unreliable at times, especially during periods of heavy usage.

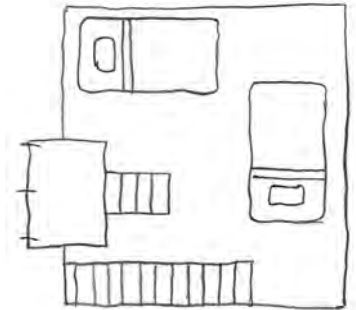




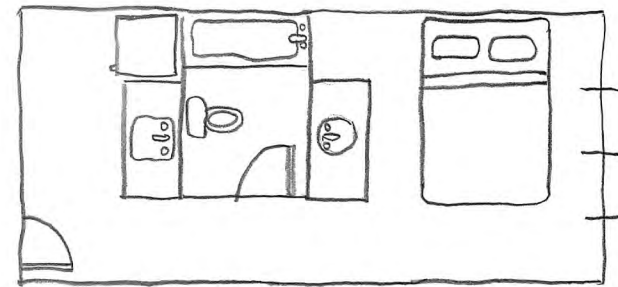
Lodge rooms can house 3 visitors each, and feature bathrooms & kitchenettes.



FIRST FLOOR



SECOND FLOOR





COMMUNAL STUDIO SPACES





Spaces within the outdoor and indoor communal work areas are available to visitors.

The Chalet Studio can accommodate a dozen work-spaces and is also home to the fibers studio.

Most apartments in the lodge have tables to work at and can be furnished with heavier-duty work tables upon request.

The open-air wood shop, and the adjacent covered outdoor area can be great places to set up work spaces.

The covered porches that wrap around the main lodge are set up with work tables, and can be directly accessed through each apartment in the lodge.

"My practice will never be the same. I can hardly believe that 2 weeks in the middle of nowhere could change me so much. The critical, creative, and encouraging environment of ACRE is like nowhere else on Earth. I want to live in that space forever..."

-former resident

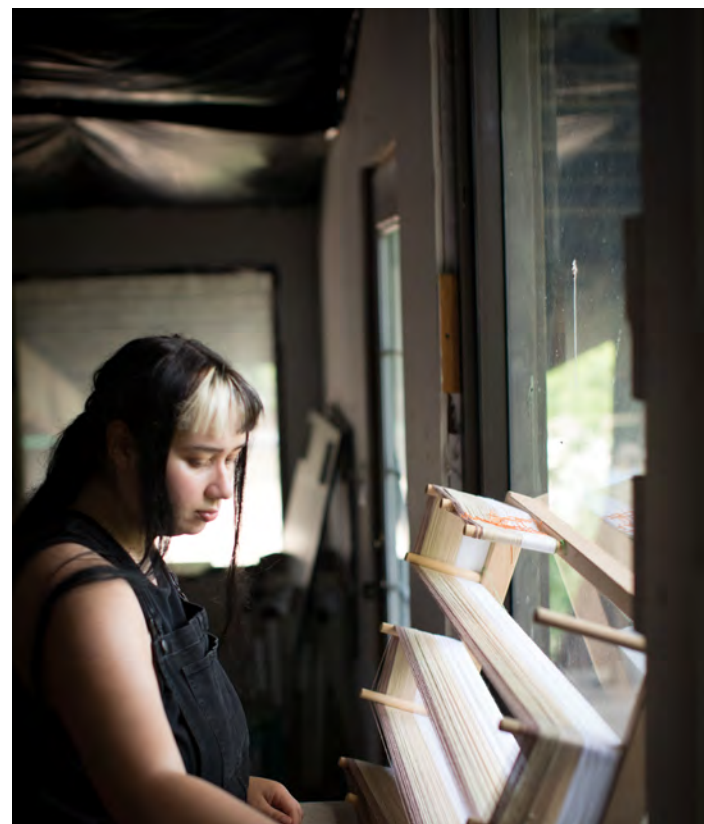
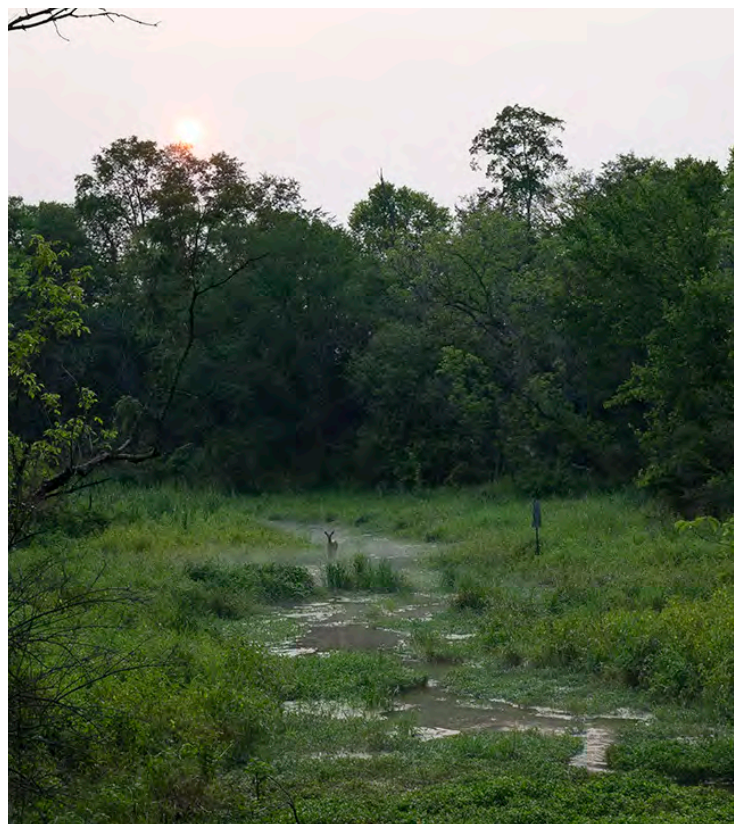


THE GROUNDS:

ACRE encourages visitors to set out into the sprawling grounds to find new places to be inspired. Visitors often hike into the hills, to record sound or video, map the land, or create site-specific installations.

Favorite activities are foraging and nature walk excursions. Wildlife such as trumpeter swans and bald eagles share the landscape with the residency.







GATHER AT ACRE



KITCHEN



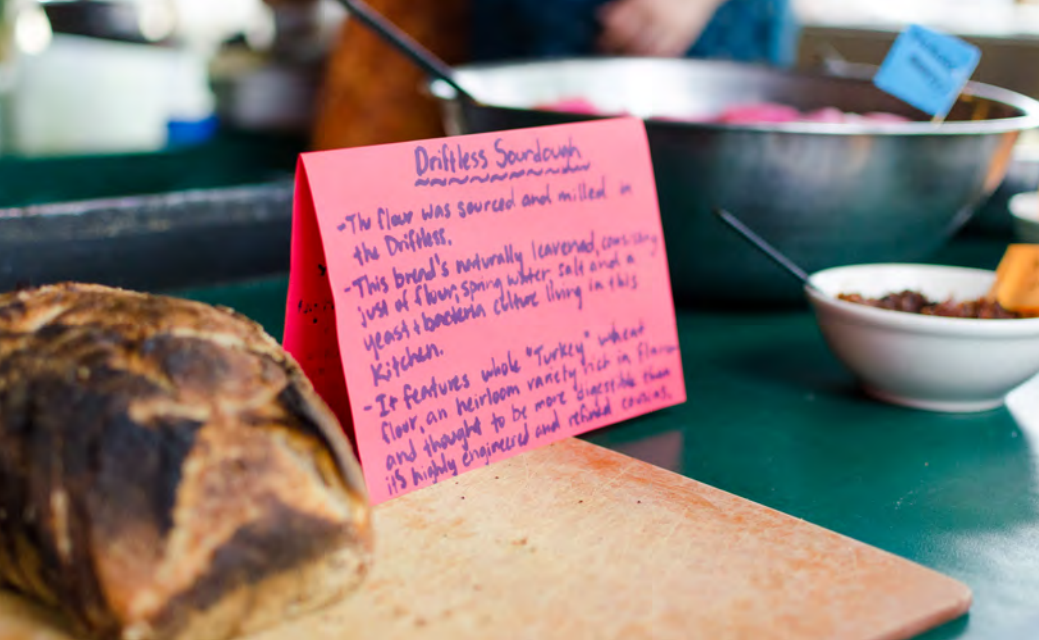
Scattered throughout the grounds for most of the day, all artists and staff come together for exceptional meals and conversations.

Breakfast is provided each morning in the lodge, available from 8-10am, continental style. Visitors eat lunch and dinner communally in a large indoor/outdoor dining hall.

Created by a large team of chefs and assistants, each meal is made from

locally-sourced meats, veggies, and dairy.

Options for vegans and vegetarians are always available, and food is prepared specially for those with other dietary restrictions.



A NOTE FROM OUR CHEFS:

Food is an integral aspect of the residency experience at ACRE. We are a volunteer, artist-run kitchen dedicated to providing healthy meals and supporting sustainable food producers around the Driftless region of southwest Wisconsin. Leading up to the residency, the kitchen staff works as a team to design a diverse menu including options at every meal to accommodate dietary restrictions. Our collective passion for quality and the opportunity to learn from each other motivates us to make as much as possible from scratch.

As our kitchen grows we are also incorporating programming for staff and residents to explore historical, aesthetic, and political dimensions of eating. As artists who are interested in food, we

try to integrate some of our own conceptual interests by curating an experience of appreciation and learning through workshops, lectures, tastings, tutorials and panel discussions. Past events have included thorough foraging walks, debates about sustainable agriculture between local Amish and certified organic farmers, beer and cheese tastings and lessons on pasta making, nettle harvesting and butchering techniques.

Whether it's a debate about the efficacy or ethics of food production, experimenting with new culinary techniques, or sharing an old family recipe, the ACRE Kitchen is constantly seeking to expand our community's experience of the food we share at the table.



ADDITIONAL OFFERINGS + EXPERIENCES



"As someone who lives in a city and works full-time, coming to ACRE was a rejuvenating and productive experience. Unlike other residencies, ACRE creates an environment that is open to everyone- you can reflect, you can discuss, you can learn and you can produce."
-former resident



STUDIOS + WORKSHOPS:

ACRE's is an ideal place to gather with your group. Take time for rest or utilize our facilities to conduct workshops, or facilitate research and planning time.

You can also work with us to coordinate workshops of skill sharing with our knowledgeable staff of artists via informal workshops in one of our

technical studios or focused on a specific medium to best serve your group.

Group specific workshops are available for an additional fee to cover the cost of materials and ACRE staff artist's time.



WOODSHOP

ACRE's woodshop is a 2000 square foot covered outdoor area with a concrete floor, electric, and lots of work tables and tools.

ACRE's woodshop sits next to a lumber yard full of old growth timbers and usable scraps from buildings demolished in Chicago and salvaged by Bob Samuelson, one of the owners of the farm. In the past, access to this lumber is available for a small fee. The wood

shop staff also facilitates other sculptural processes, such as mold making and casting.

At least one volunteer technician is always available to advise and assist with projects.



WOODSHOP EQUIPMENT:

Jointer (6"), Surface Planer (12"), Pancake Air Compressor, Contractor Table Saw (10"), Drill Press, Sliding Miter Saw, Oscillating Belt Sander, Assorted Clamps, Assorted Hand Tools, Assorted Nail Guns, Shop Vice, Soldering Iron, Cordless Drills, Jigsaws, Circular Saw, Palm Sanders, Bench Grinder, Hand-held Grinder, Drill Bits, Forstner Bits, Spade Bits, Assorted Hardware, Wood Glue, Table Saw Accessories: Cross Cut Sled, Miter Gauge

note: guests planning to make heavy use of the woodshop should bring or be prepared to buy or replace consumable items such as screws and sandpaper



SCREENPRINTING



Screenprinting workshops and guided assistance from master printers are available to everyone.

Built in the summer of 2011, ACRE's screen printing studio contains a dark room, exposure unit, printing stations with hinge clamps, dozens of screens, drying equipment, and more. Staffed by a master screen printer at all times, the lab

provides limited inks, emulsions, transparencies, and other supplies to any resident that wishes to use them.

Artists are also enabled to experiment with cyanotypes, monoprinting, and relief printing.



Artists who plan to print should plan to bring their own paper, fabric, or material to print on, inks they know they will specifically want to work with or other specialty supplies.

Access to scanners, computers and printers in other areas of the farm will be provided for creating images to work with.



SOUND STUDIO

Musicians, sound artists, and novices come through the sound studio to work with friendly, experienced engineers.

ACRE's sound department supports live performance, field recording, and an isolated studio environment. With digital recording capabilities, an expanding collection of microphones, and a vast selection of equipment and software, our

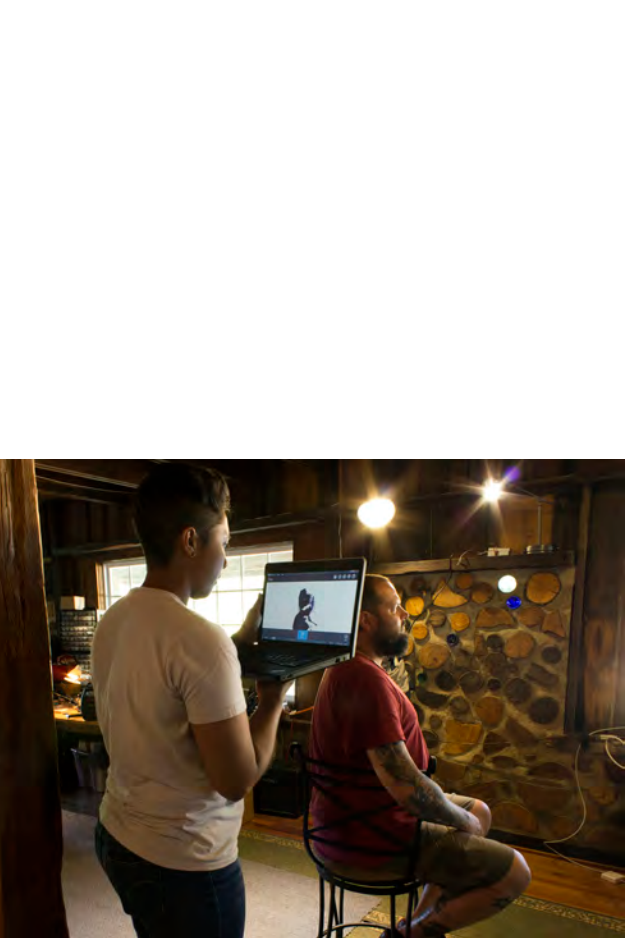
staff of sound engineers are able to provide insight and assistance on almost any sound-based project, in addition to offering workshops and tutorials on equipment, software, and instruments.



SOUND STUDIO EQUIPMENT:

Audio Technica 4033 microphone and shock mount, Samson CO2 pencil condenser pair, ATR25 stereo condenser microphone, early 70s Turner instrument mics, oktava Mk-012 Condensor mic, later 80s Ev series drum mics, 2 Sure SM57 mics, 60s Pearl drum kit, Alesis Ion Kurzweil K2000, Event active studio monitors, Sunn TC50 guitar amp combo 1x12, Cellular automata video synthesizer, Global bass guitar, various effects pedals, Zoom h4n field recorder, Ka\$ino 8x10 combo amplifier, Fender Hot Rod Deluxe 1x10 combo amplifier

THIS IS A SIMPLIFIED LIST OF AVAILABLE EQUIPMENT, PLEASE CONTACT US FOR MORE SPECIFIC INFORMATION.

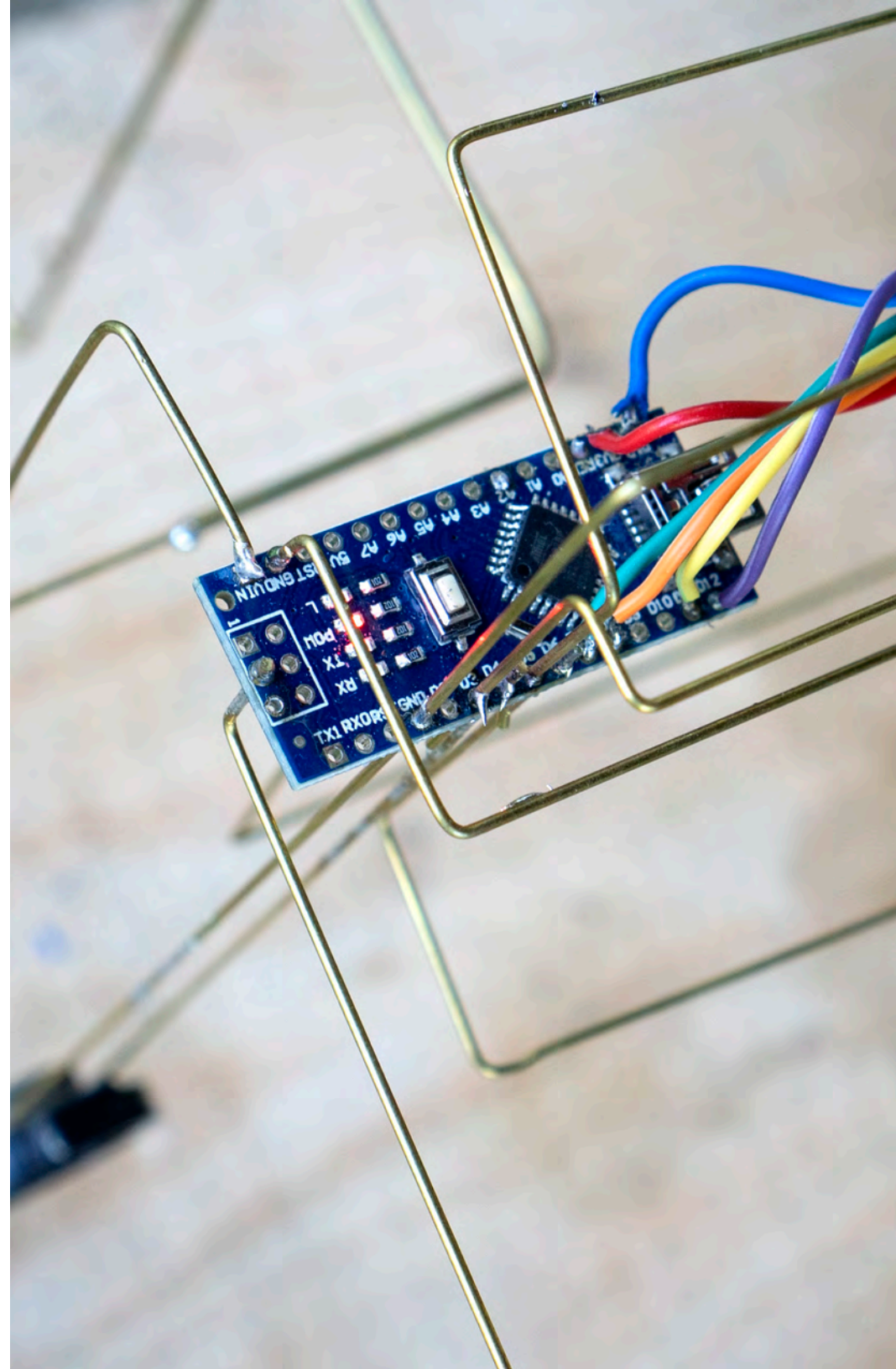


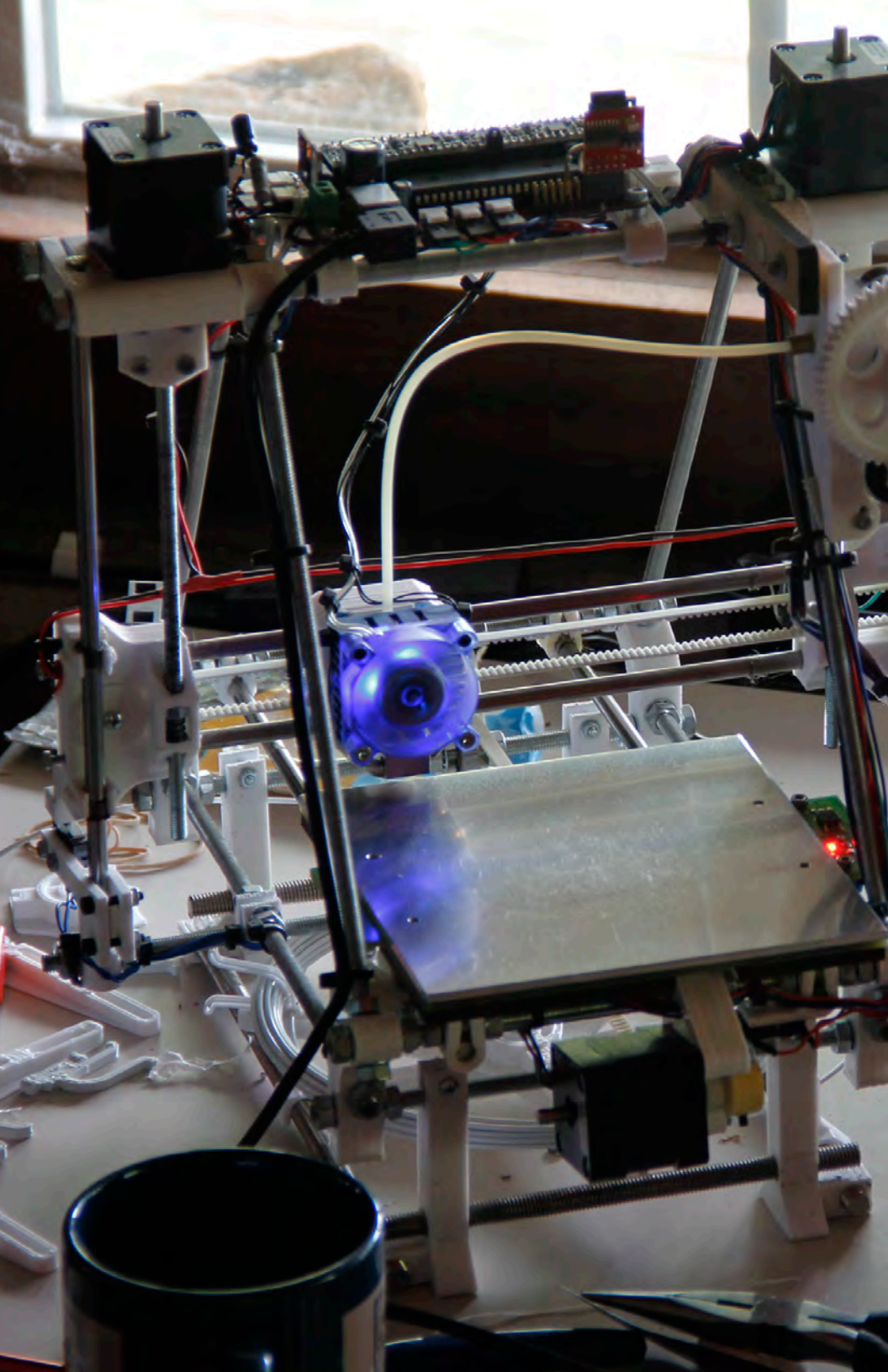
A/V + TECH

The A/V + Tech lab has an abundance of software for editing photo, sound, and video.

Moved to a larger building in 2013, ACRE's Audio Visual Technology lab is a hub of activity at the farm. ACRE staff has custom built super-fast mac/windows/linux-capable computers with an array of video

and image editing software, as well as 3D rendering tools. Audio editing software is also available, allowing artists to experiment with tracks made in the recording studio and elsewhere.





The A/V + Tech lab
is a resource for both
experienced tech-heads
and beginners alike.

ACRE's space for electronics, robotics and 3D prototyping are designed to introduce newbies to electronics and advanced software.

In addition to the things you'd expect to find in any general purpose electronics lab, some unique capabilities of our space are: 3D printing and scanning, basic

robotics, and power electronics for various types of lighting.

We stock all the common electronic components like resistors, capacitors, discrete transistors and commonly-used ICs.

A/V + TECH EQUIPMENT:

2 Fast Mac/Windows/Linux Capable computers with full range of up-to-date software, Canon 7D Camera, various lenses, video and photo tripods, 3 video projectors, Tascam DR-40 4-Track Handheld Digital Audio Recorder, soldering irons, circuit-board prototyping tools, Arduinos, electronics test instruments (oscilloscope, etc.), power supplies, Reprap Huxley 3D Printer (can print objects up to 5.5" x 5.5" x 4.3" in PLA plastic), Cubify Sense 3D Scanner

THIS IS A SIMPLIFIED LIST OF AVAILABLE TOOLS, PLEASE CONTACT US FOR MORE SPECIFIC INFORMATION.



FIBERS



Artists can learn to weave on a number of different types of looms.

ACRE's Fiber Studio was introduced in 2014 and is lofted above the general studio area in the Chalet building. The studio boasts three large floor looms and three tabletop looms with all the accessories needed to warp and weave. Artists should plan to supply their own yarn for large projects.

The Fiber Studio is also equipped with a sewing machine and materials

for sewing, embroidery, and crochet.

A small dye studio was added in 2016 allowing for working with natural dyes.

A Fiber Studio tech can be made available to help with fiber-related projects and will provide weaving workshops and other fiber related tutorials to interested residents.

FIBERS EQUIPMENT:

4 Harness Rug Weaving Loom, 8 Harness Standing Loom, 3 4-Harness Tabletop Loom, Warping Board, Boat Shuttles, Rag Shuttle, Flat Shuttles, Bobbins, Reed Hook, Pick-up Sticks, Various Yarn, Fabric Scissors, Scissors, Various Fabric + Scraps, Drop Spindle, Various Raw Wool, Embroidery Floss, Various Embroidery Hoops, Sewing Machine, Various Thread, Various Needles, Pins, Various Crochet Hooks, Iron, Ironing Board

THIS IS A SIMPLIFIED LIST OF AVAILABLE TOOLS, PLEASE CONTACT US FOR MORE SPECIFIC INFORMATION.



CERAMICS

Access to electric kilns and basic ceramics supplies, clay and glazes are provided in our Ceramics Studio.

Established in 2015, the ceramics studio can accommodate those with previous experience and those new to working with ceramics.

We fire to cone 04 and cone 6 with two electric kilns that can handle pieces 24" tall and 21" in diameter. Residents interested in using the

ceramics studio are highly encouraged to bring their own clay and glaze supplies if possible.

A ceramics staff person can be made available to lead workshops, assist with projects, and manage the studio.



CERAMICS EQUIPMENT:

Cress FX-27P electric kiln,
Skutt KM-1027 electric
kiln, Brent potter's wheel,
Kick style potter's wheel,
hand tools, earthenware
white clay, stoneware white
clay, tan tableware clay, a
variety of low fire, midrange,
homemade and commercial
glazes



ACRE's volunteer staff is dedicated to making the residency a transformative and unforgettable experience.

FIND OUT MORE AT ACRERESIDENCY.ORG

ACRE is a 501c3 non-profit supported in part by National Endowment for the Arts, Illinois Arts Council, Gaylord & Dorothy Donnelley Foundation, Chicago Department of Cultural Affairs and Special Events, MacArthur Funds for Culture, Equity, and the Arts at the Richard H. Driehaus Foundation, and through the generosity of our supporters and volunteer staff.